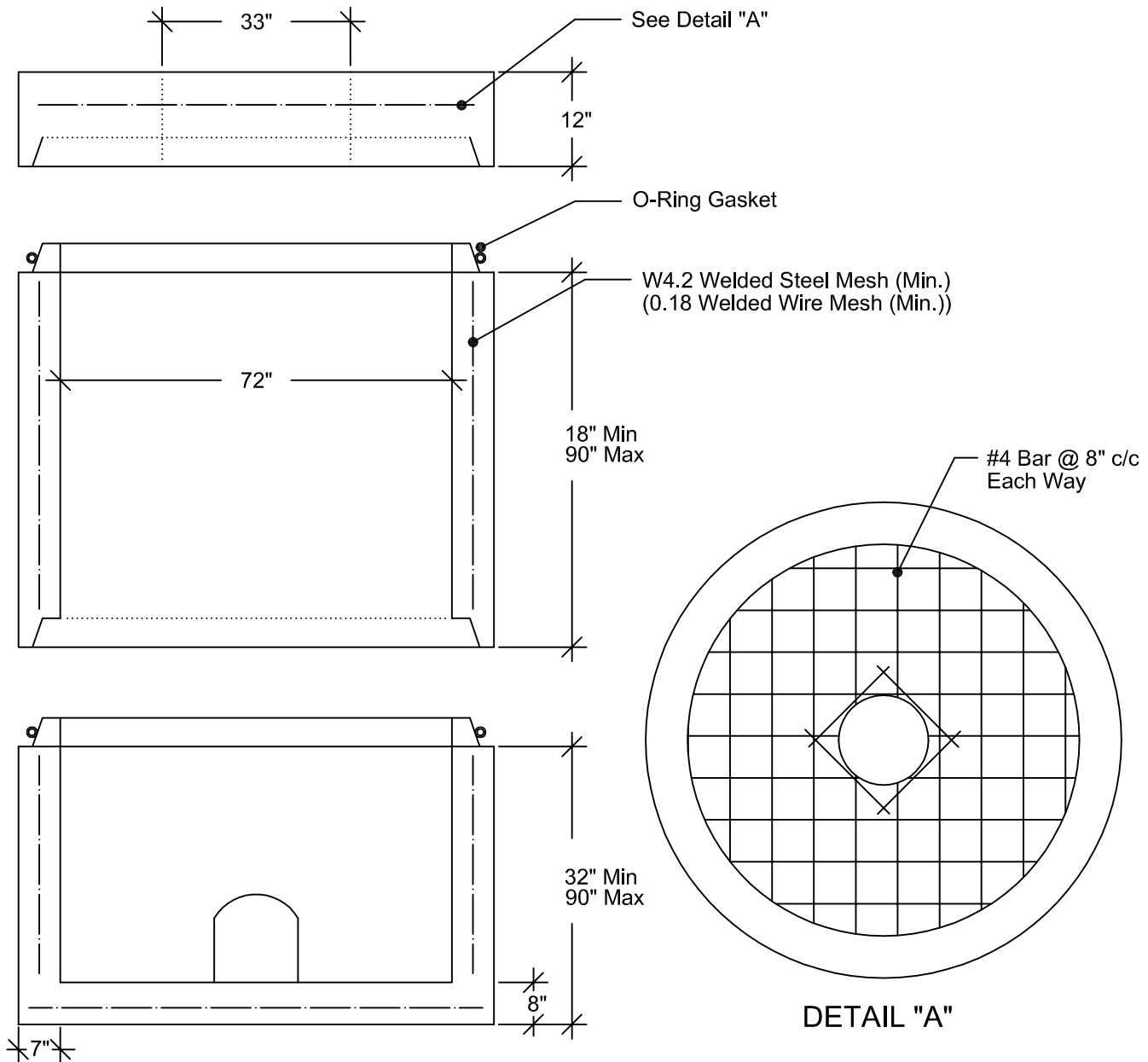


Precast Concrete Manhole (72" ID) Storm Sewer (Flat Top, Bottom)

SPECIFICATIONS:

ASTM C478
 Concrete: 4000 PSI (Min.)
 Approx. Wt./LinFt: 1800 Lbs.
 Joint O-Ring Gasket
 Steel: Grade 60

Openings for inlets & outlets are made 4 inches larger in diameter than the outside diameter of the pipe & are located as required per plans.



2100 NORTH 161ST E. AVE.
 TULSA, OKLAHOMA 74116



WWW.GNCCONCRETEPRODUCTS.COM

OFC: (918) 438-1182
 FAX: (918) 438-1185