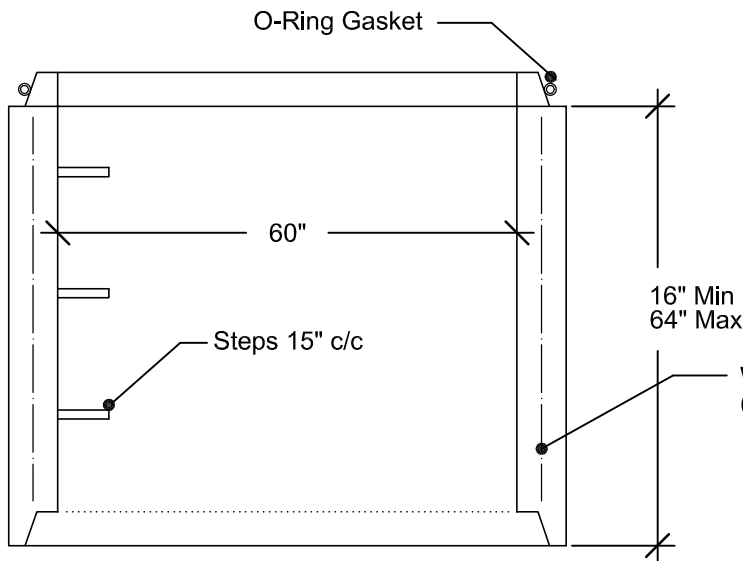
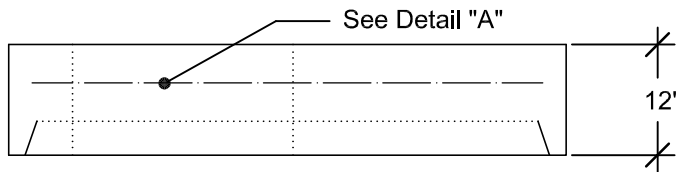
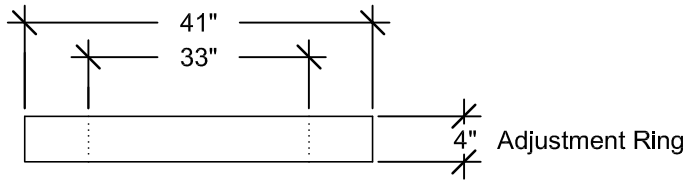


Precast Concrete Manhole (60" ID) Sanitary Sewer (Bottom, Invert, Flat Top & Steps)

SPECIFICATIONS:

ASTM C478
 Concrete: 4000 PSI (Min.)
 Approx. Wt./LinFt: 1300 Lbs.
 Joint O-Ring Gasket ASTM C-443

Inlet & Outlet pipe shall be joined to the manhole with a gasketed flexible watertight connection that allow differential settlement of pipe & manhole wall to take place. (A-lok or Equal)



W4.0 Welded Steel Mesh (Min.)
(0.15 Welded Wire Mesh (Min.))

