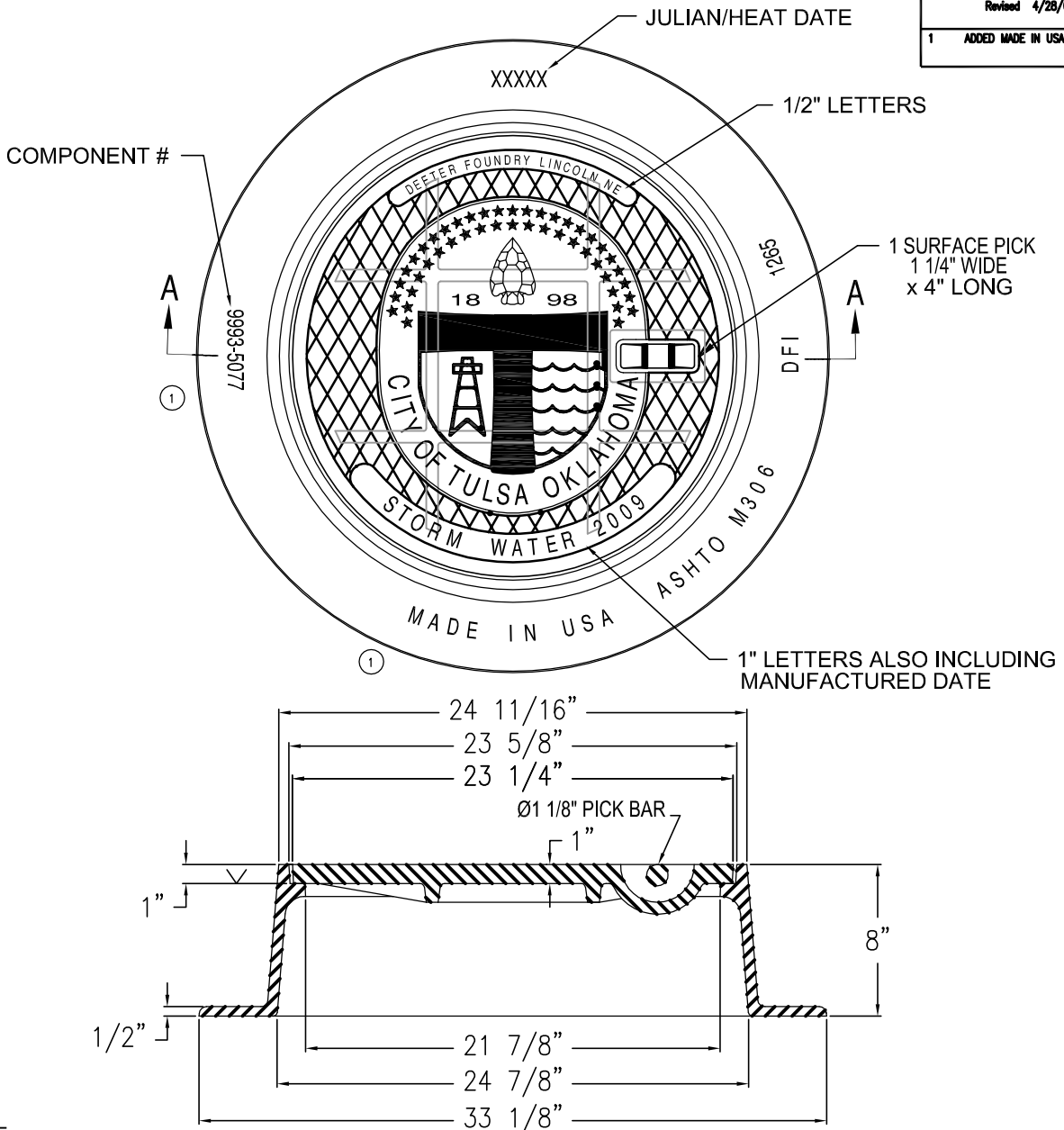


Manhole Ring & Cover #1265




| |
|----------------------------------|
| Revised 4/28/00 KRH |
| 1 ADDED MADE IN USA, COMPONENT # |

NOTE:

- FURNISHED WITH MACHINED HORIZONTAL BEARING SURFACES.
- BACK SIDE OF COVER READS: MADE IN USA, JULIAN HEAT DATE & ASHTO M306.

| | |
|-----------|-------------------------------------|
| MATERIAL: | CAST GRAY IRON ASTM A-48, CLASS 35B |
| FINISH: | NO PAINT |
| WEIGHT: | FRAME 160 LBS. |
| WEIGHT: | COVER 120 LBS. |

| | | | |
|--|---|----------------------|-----------|
|  | Deeter Foundry, Inc. | | |
| | 5945 NORTH 70th STREET LINCOLN, NEBRASKA 68529 | | |
| # | 1265 TUL-STM | MANHOLE RING & COVER | |
| Date: | 20 NOV 01 | Drawn by: | KRH |
| | | Scale: | 1/8 |
| DRAWING NO. | 01-M1265-TUL-STM | Revised by: | KRH |
| | | Date: | 23 OCT 02 |



2100 NORTH 161ST E. AVE.
TULSA, OKLAHOMA 74116 WWW.GNCCONCRETEPRODUCTS.COM

OFC: (918) 438-1182
FAX: (918) 438-1185